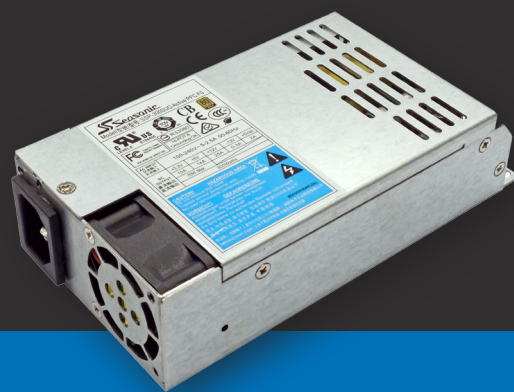


SWITCH MODE POWER SUPPLY

FLEX ATX 12 V

SSP-300SUG ACTIVE PFC



FEATURES:

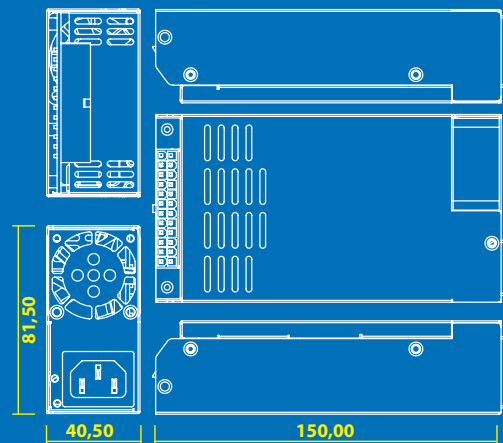
- ✓ SATA-ready
- ✓ DC to DC converter design
- ✓ High efficiency and reliability
- ✓ Low ripple and noise
- ✓ Super low noise fan control
- ✓ Short circuit protection on all outputs
- ✓ Over voltage protection
- ✓ Over power protection
- ✓ 100 % HiPot test
- ✓ 100 % Burn-in, high temperature cycled on/off

ELECTRICAL SPECIFICATIONS:

Model	DC Outputs					Total Power	Input Type
	+3.3 V	+5 V	+12 V Combined	-12 V	+5 Vsb		
SSP-300SUG	10 A	14 A	25 A	0.3 A	2 A	300 W	100-240 VAC
	100 W ¹		300 W	3.6 W	10 W		

*1 Combined +3.3 V DC and +5 V DC maximum power

Input frequency	50/60 Hz
Inrush current, cold start	100A max.
Efficiency	80 PLUS® Gold
Line regulation	± 1 % (typical)
Load regulation	± 5 % (typical)
Cross regulation	± 5 % (typical)
Ripple / Noise	1 %
MTBF, full load @ 25 °C ambient (excl. DC fan)	>100,000 hrs
Active Power Factor Correction	> 95 % (typical)



Dimensions:

EA-300SUG
150 mm (L) x 81,5 mm (W) x 40,5 mm (H)
(5.9" x 3.2" x 1.6")

Connectors:

Main Power
ATX 12 V
Peripherals: SATA, HDD, FDD

Safety and EMI/EMC:

CB	cUL	CCC
✓	✓	✓
cTUVus	TUV	BSMI
–	✓	✓

EMI/EMC:

CE	FCC	RCM
✓	✓	✓



SPECIFICATIONS MAY CHANGE WITHOUT PRIOR NOTICE.